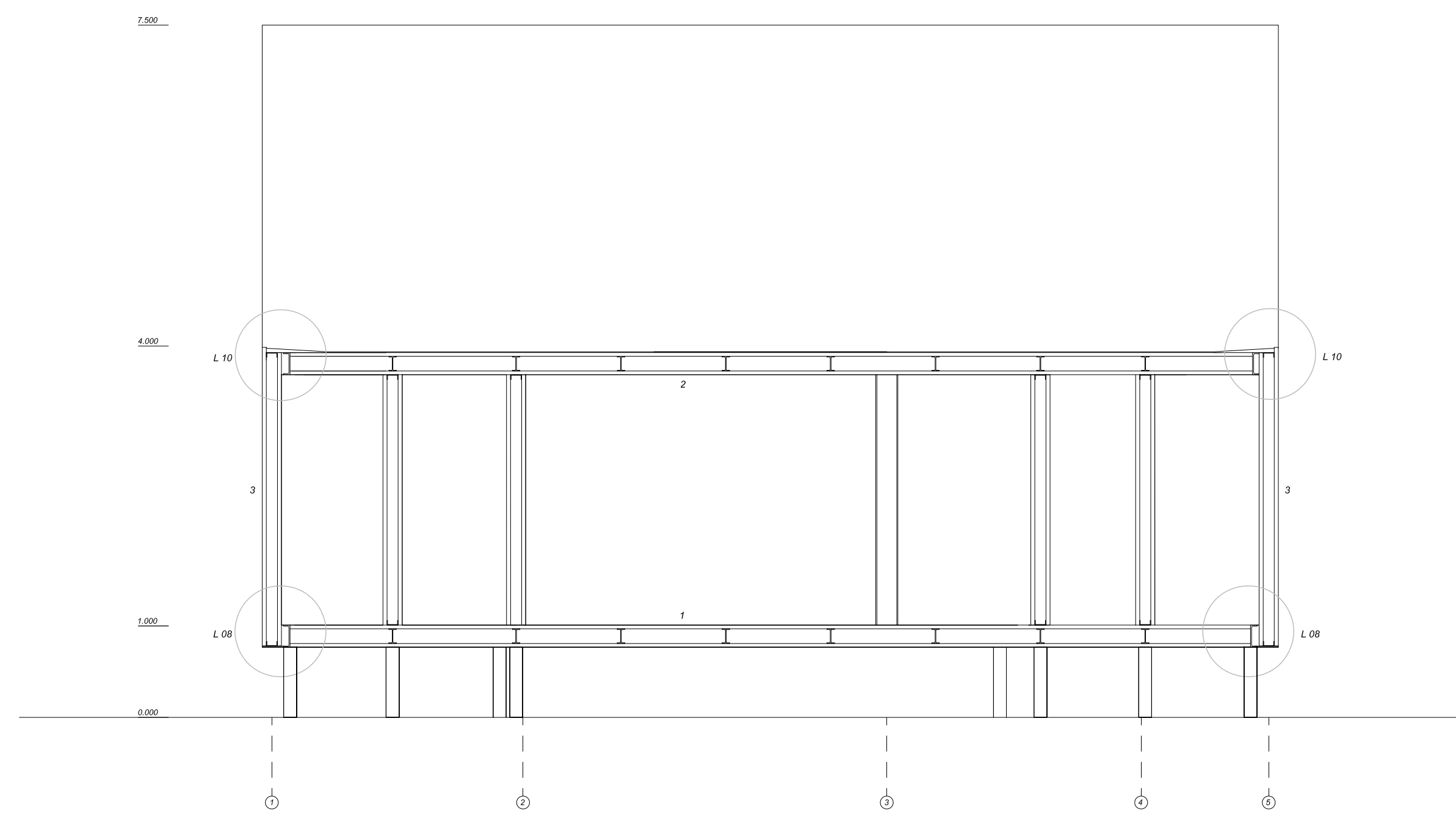
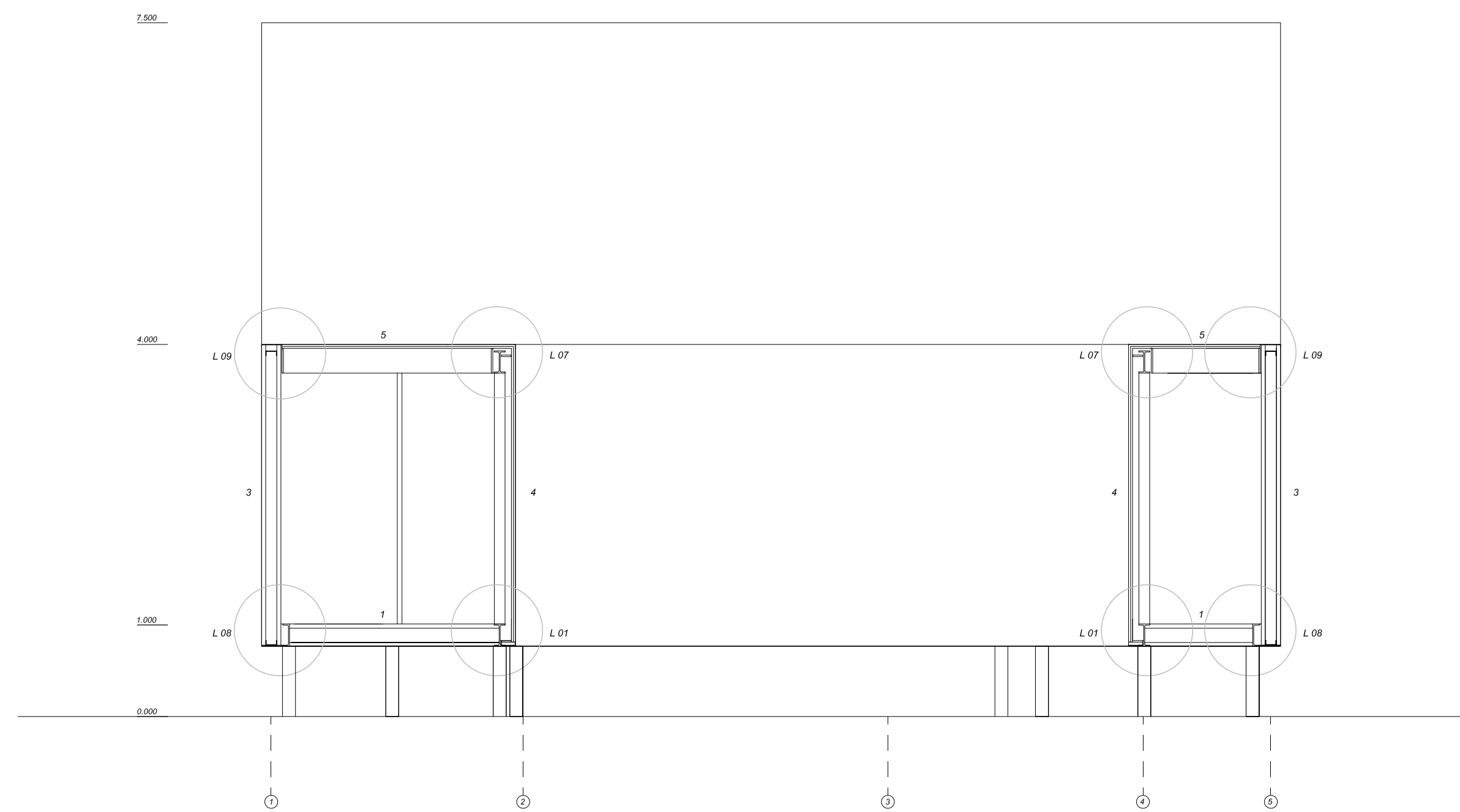


A-A



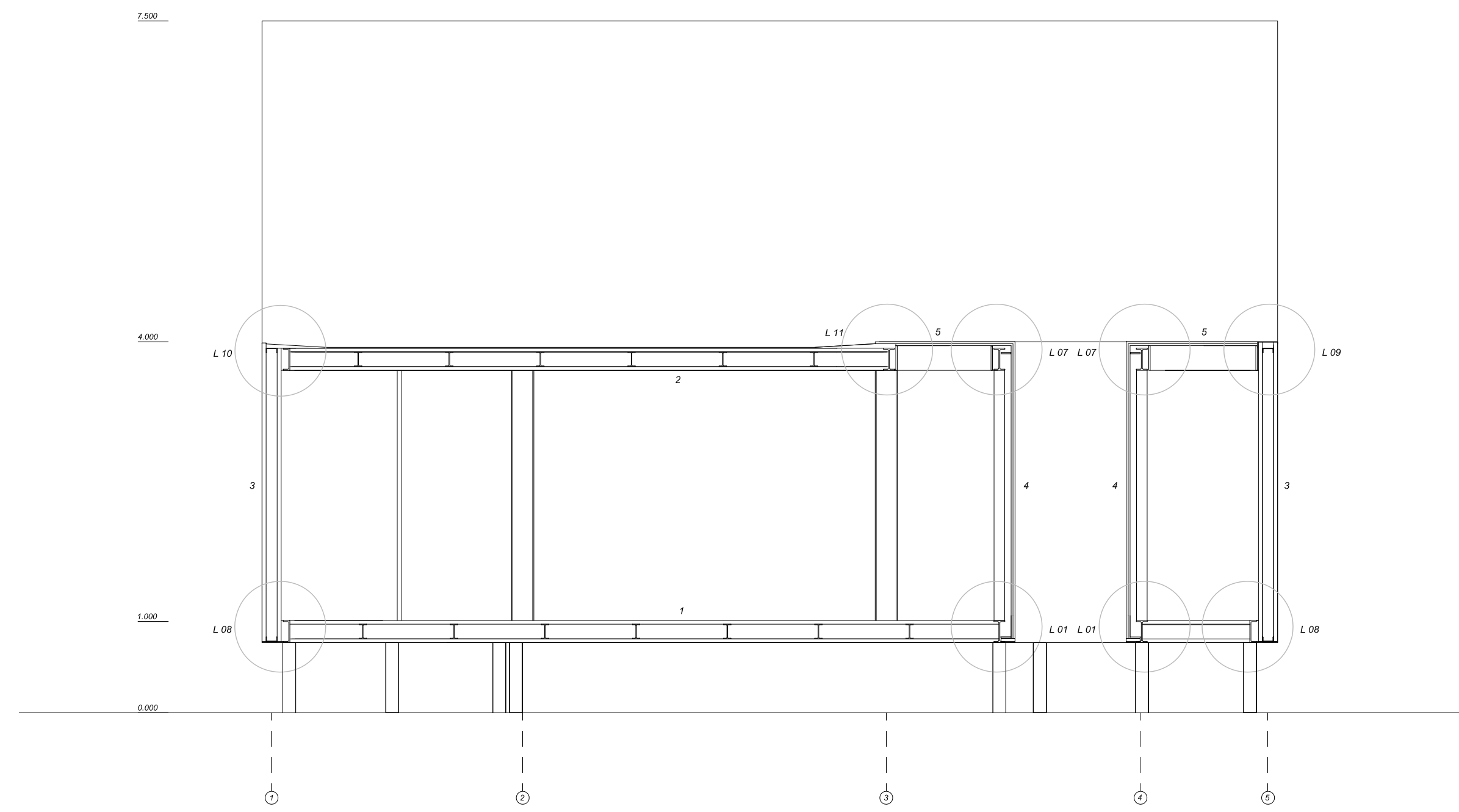
- 1. Gulvramment
- 2. Tappetramment
- 3. Golvramment
- 4. Dørskelramment

B-B



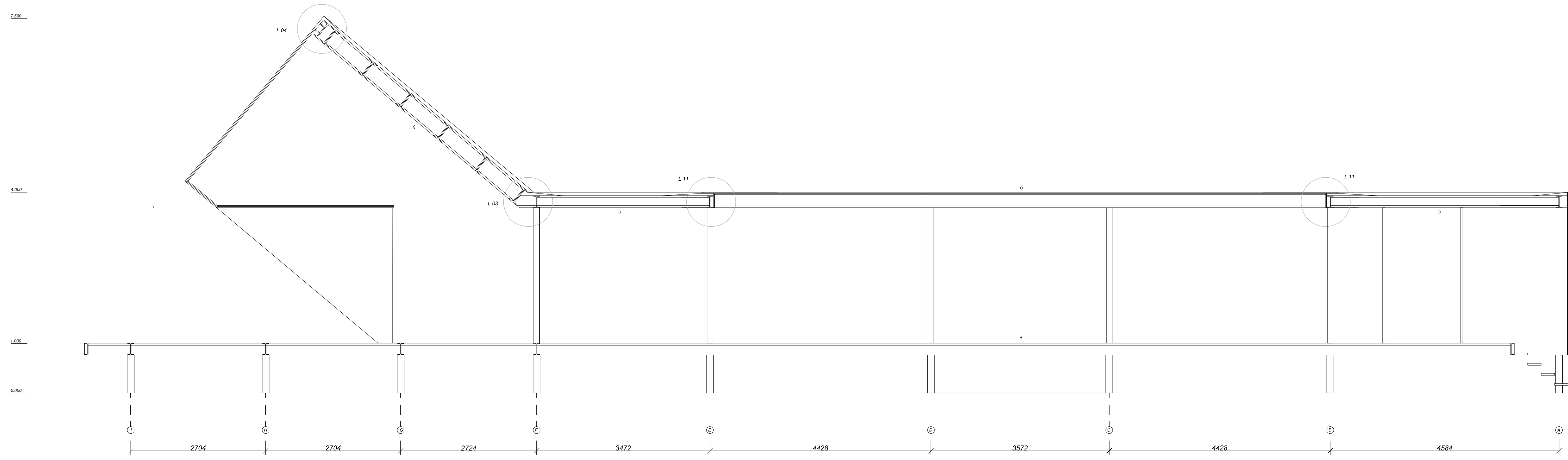
- 1. Gulvplenum
- 2. Tagplenum
- 3. Glasbeholdning
- 4. Glasbeholdning
- 5. Gulvplenum

C-C



- 1. Gulveløst
- 2. Tageløst
- 3. Gulveløst
- 4. Gulveløst
- 5. Gulveløst

D-D



- 1. Gulvbjelke
- 2. Tappelbjelke
- 3. Gulvbjelke
- 4. Gulvbjelke
- 5. Gulvbjelke
- 6. Skjeggbjelke

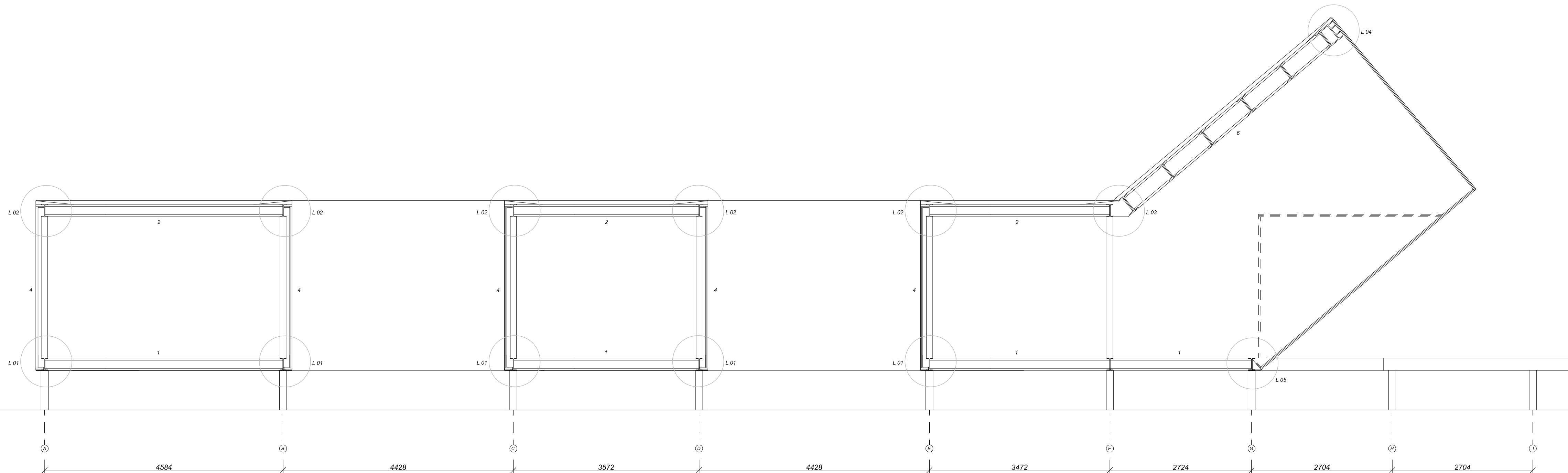
E-E

7.000

4.000

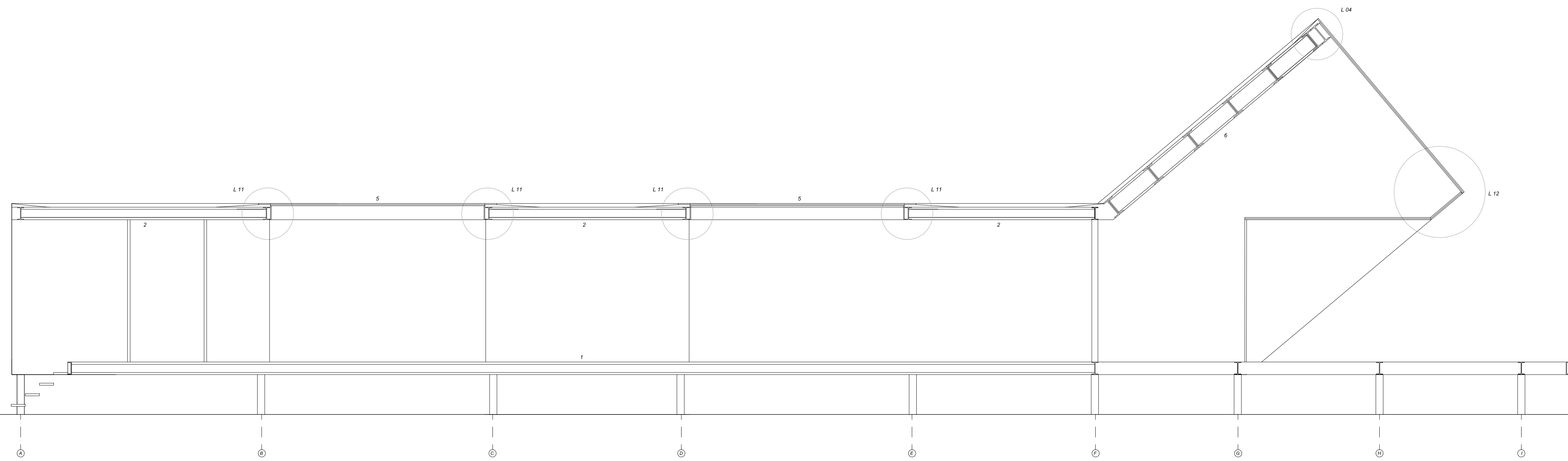
1.000

0.000



- 1. Gulvbjelk
- 2. Toppbjelk
- 3. Gavlbelegning
- 4. Strålbjelk
- 5. Strålbjelk

F-F



- 1. Gablelement
- 2. Fassadelement
- 3. Giebelwand
- 4. Glasfassadelement
- 5. Glasstapellement
- 6. Skidstapellement