

book #3 (photographs)

© 2023 Karianne Halse



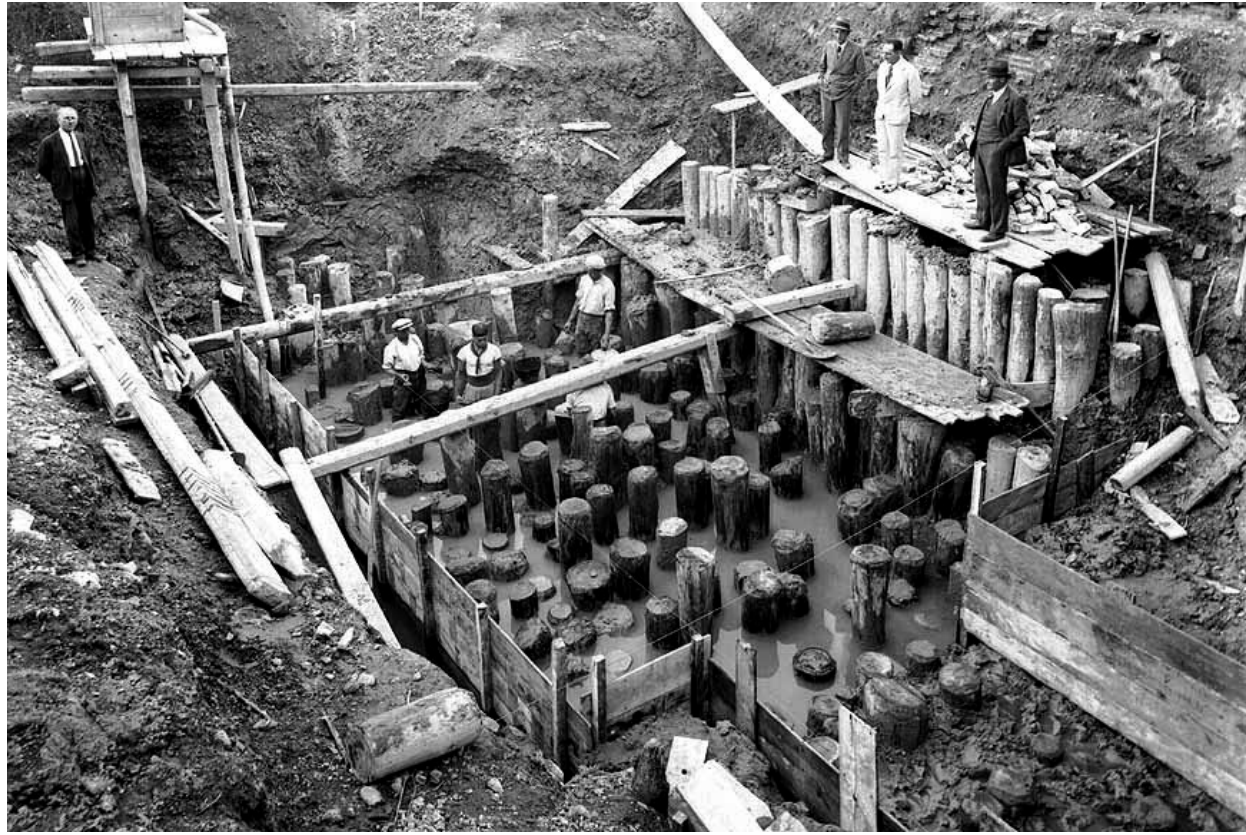
Form(s) of Instability

Demonstrations in the Architectural Potential of Weakness

Appendix to PhD dissertation

Karianne Halse

[fig. 2.1], Venice, *pile foundation*



[fig. 2.2], *Venice, wall connection*



[fig. 2.3], *Venetian Detail: 'Fiube'* (2019)



Venetian Detail: 'Zanche' (2019)



Venetian Detail (2019)



[fig. 9.7], *Venetian Detail: 'Regetta'* (2019)



Venetian Detail: 'Regetta' (2019)



Venetian Detail: 'Regetta' (2019)



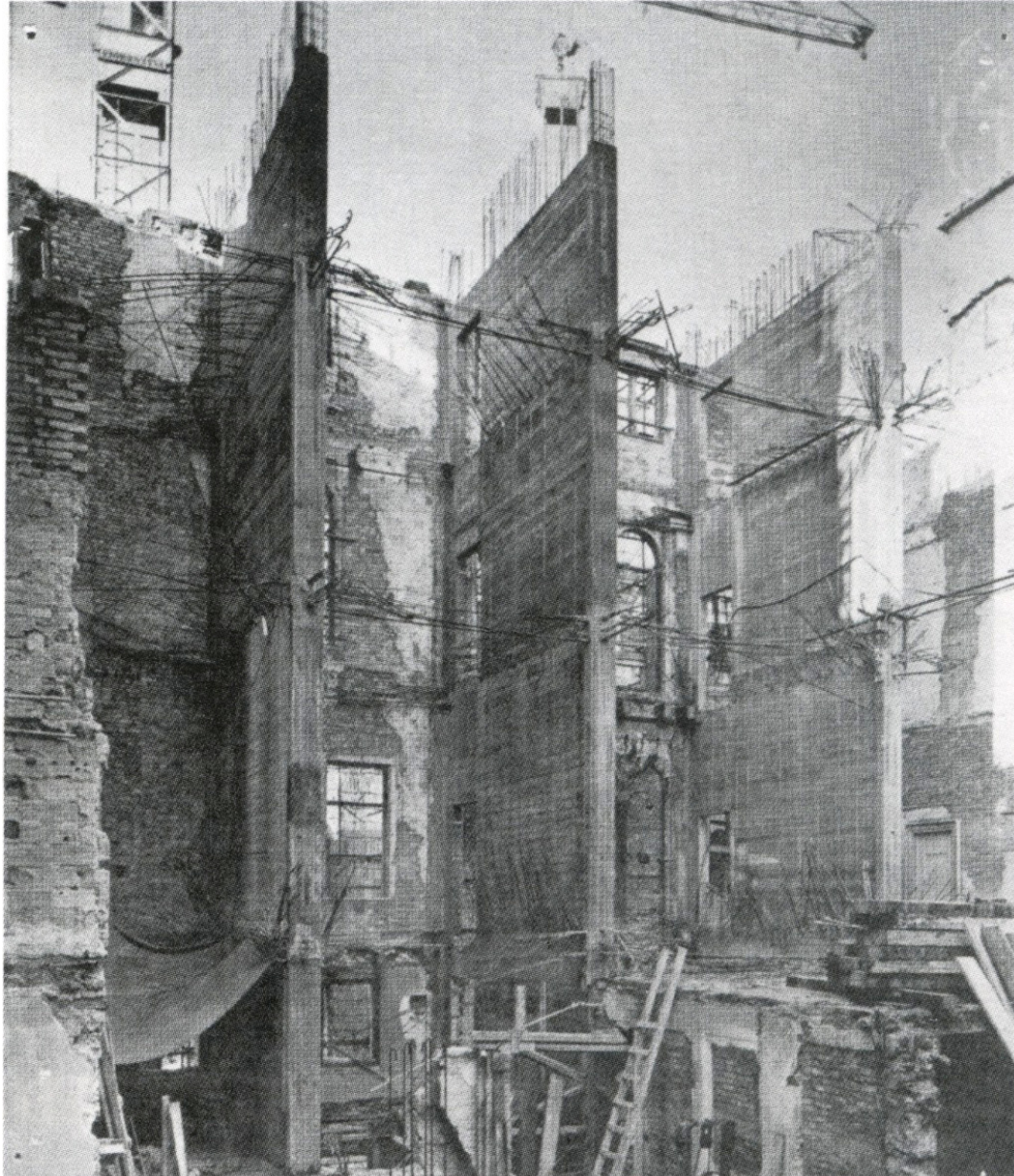
[fig. 9.6], *Venetian Detail: 'Regetta', Punta della Dogana* (end of the 17th century / 2018)



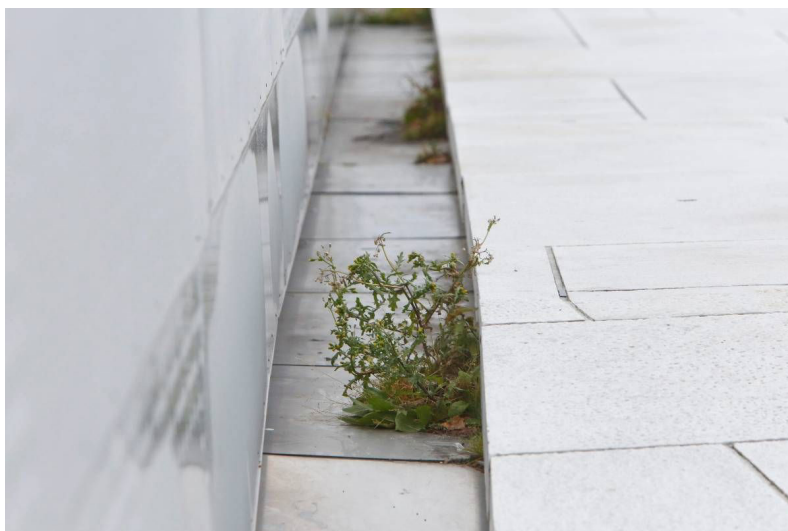
[fig. 9.6], *Venetian Detail: 'Regetta'*, (unused) (2019)



[fig. 2.4], *Venice, restoration with reinforced concrete*



[fig. 3.1, 3.2], *Oslo Opera House*



[fig. 4.2, 4.3], Gunnar Aagaard Andersen *Portrait of My Mother's Chesterfield* (1964), C. Kerez, *Incidental Space* (2016)



[fig. 5.7, 5.8], Andrei Tarkovsky, *Stalker* (1979)



[fig. 6.1], *sacrificial anode*



[fig. 6.2], *sacrificial lime layer*



sacrificial parge coat



[fig. 6.5], *lime mortar*



[fig. 6.4], **Measureings**: 'The Dramaturgy of Lime' (2018)



[fig. 6.6], **Measureings**: 'The Dramaturgy of Lime' (2018)



[fig. 6.7], **Measureings:** 'The Dramaturgy of Lime' (2018)



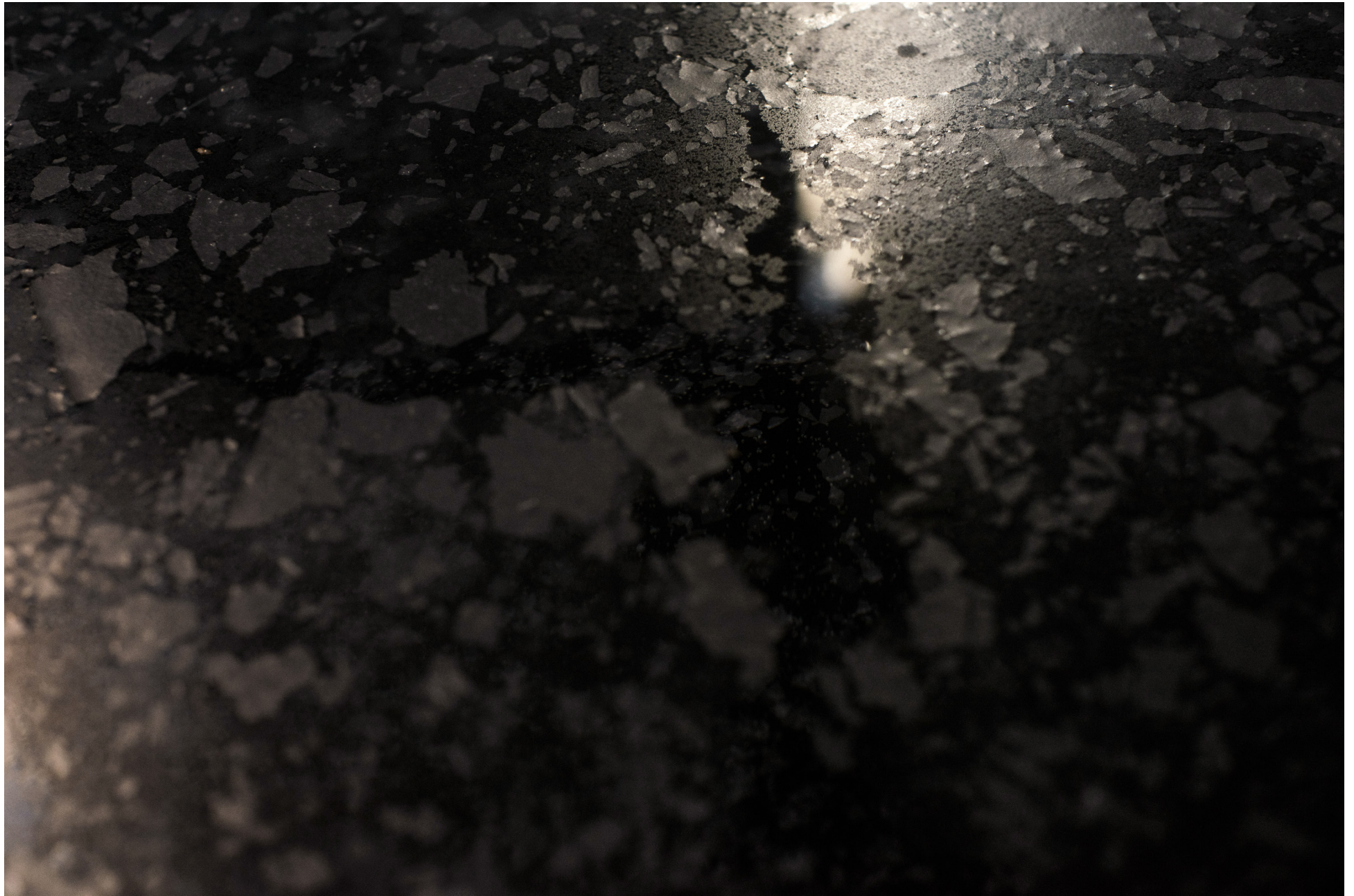
[fig. 9.13], **Measureings**: 'The Dramaturgy of Lime' (2018)



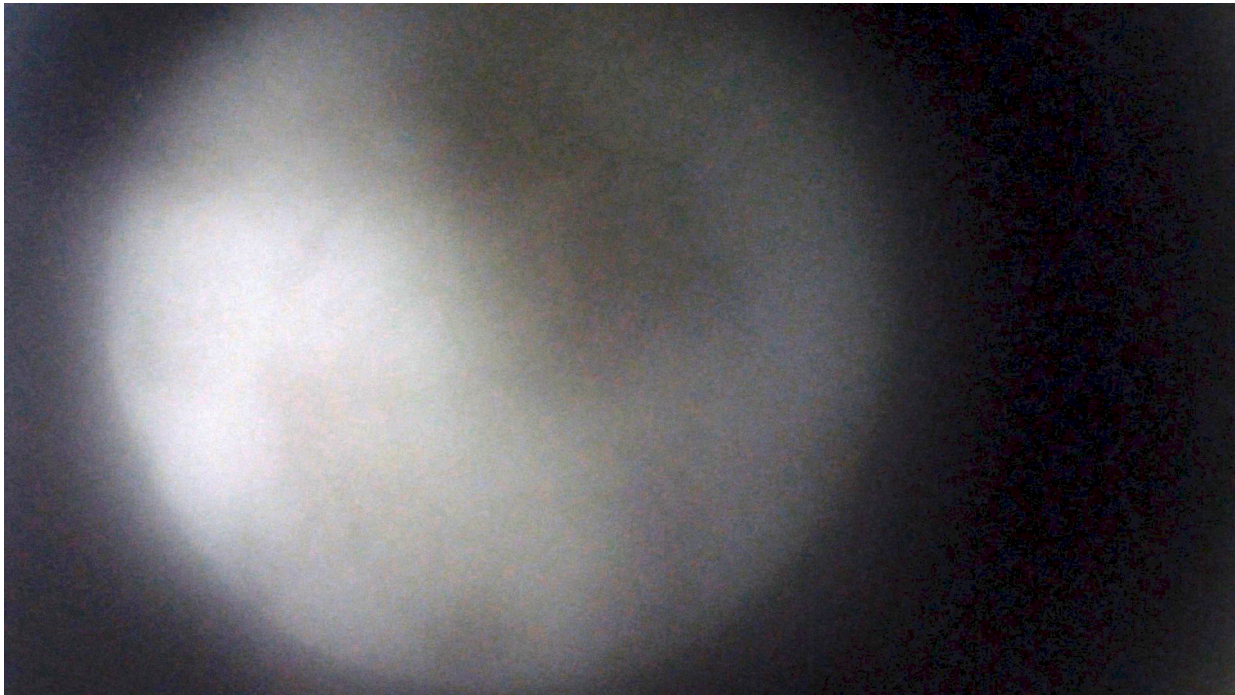
[fig. 6.8], **Measureings**: 'The Dramaturgy of Lime' (2018)



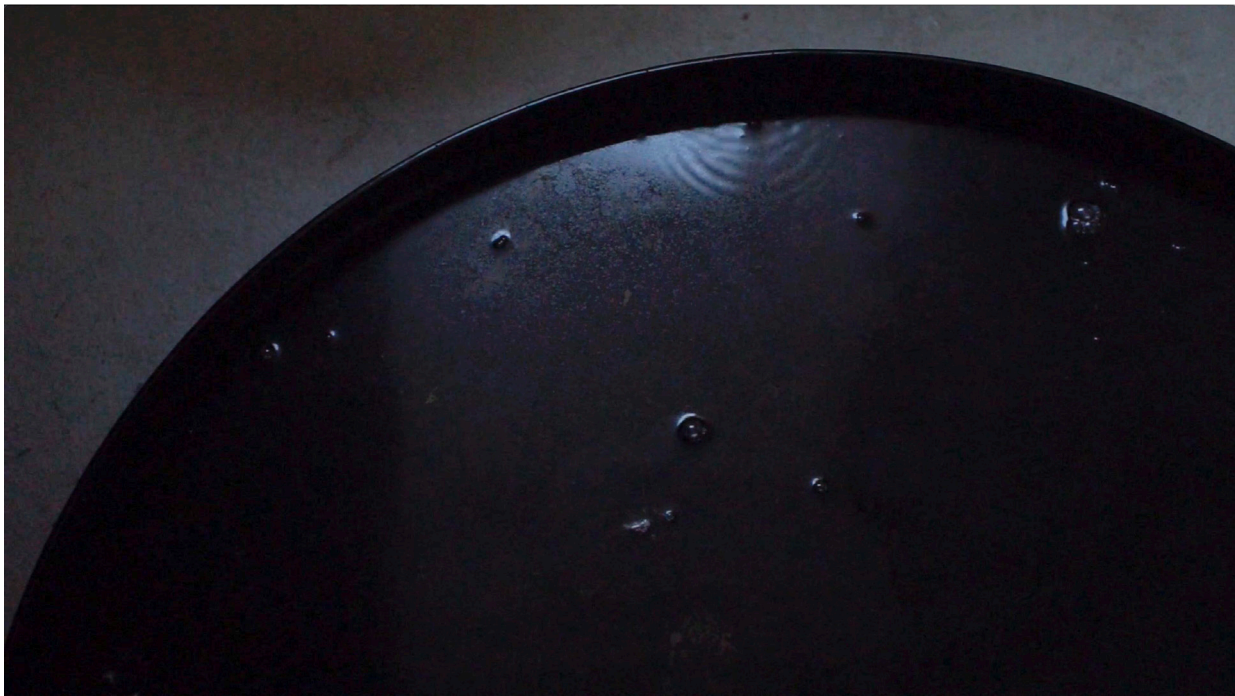
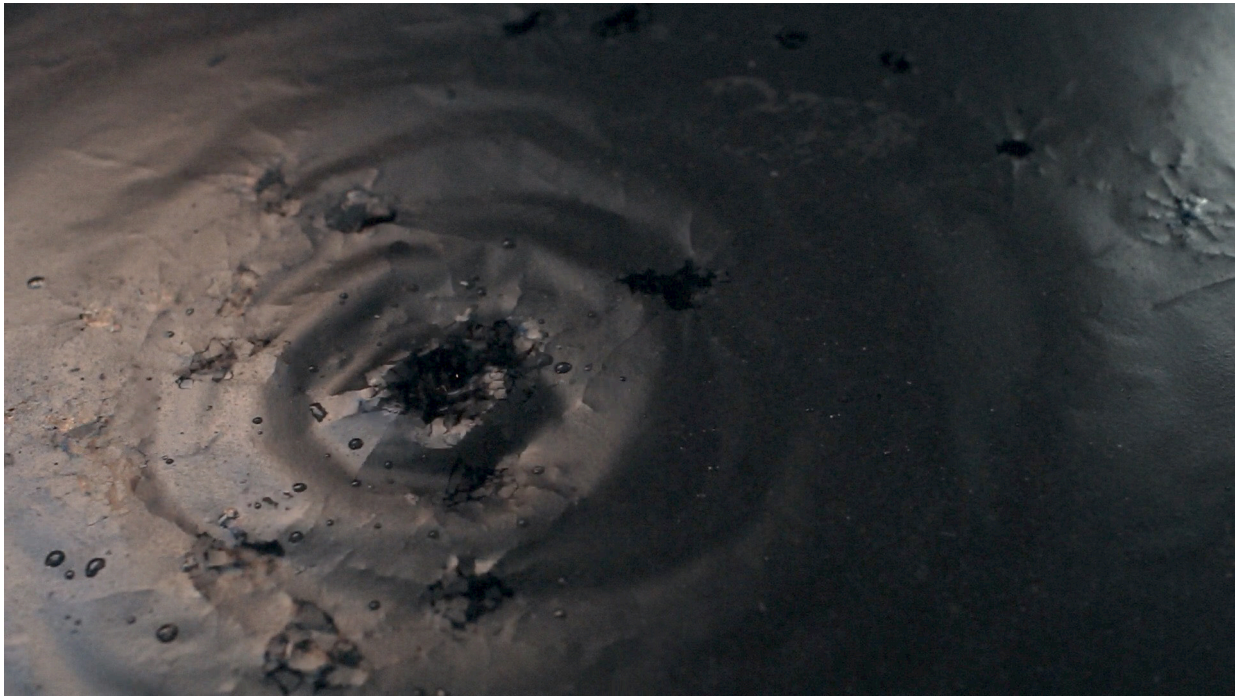
[fig. 5.2], **Measureings**: 'The Dramaturgy of Lime' (2018)



[fig. 6.10-6.12], **Measureings:** *'The Dramaturgy of Lime'* (2018)



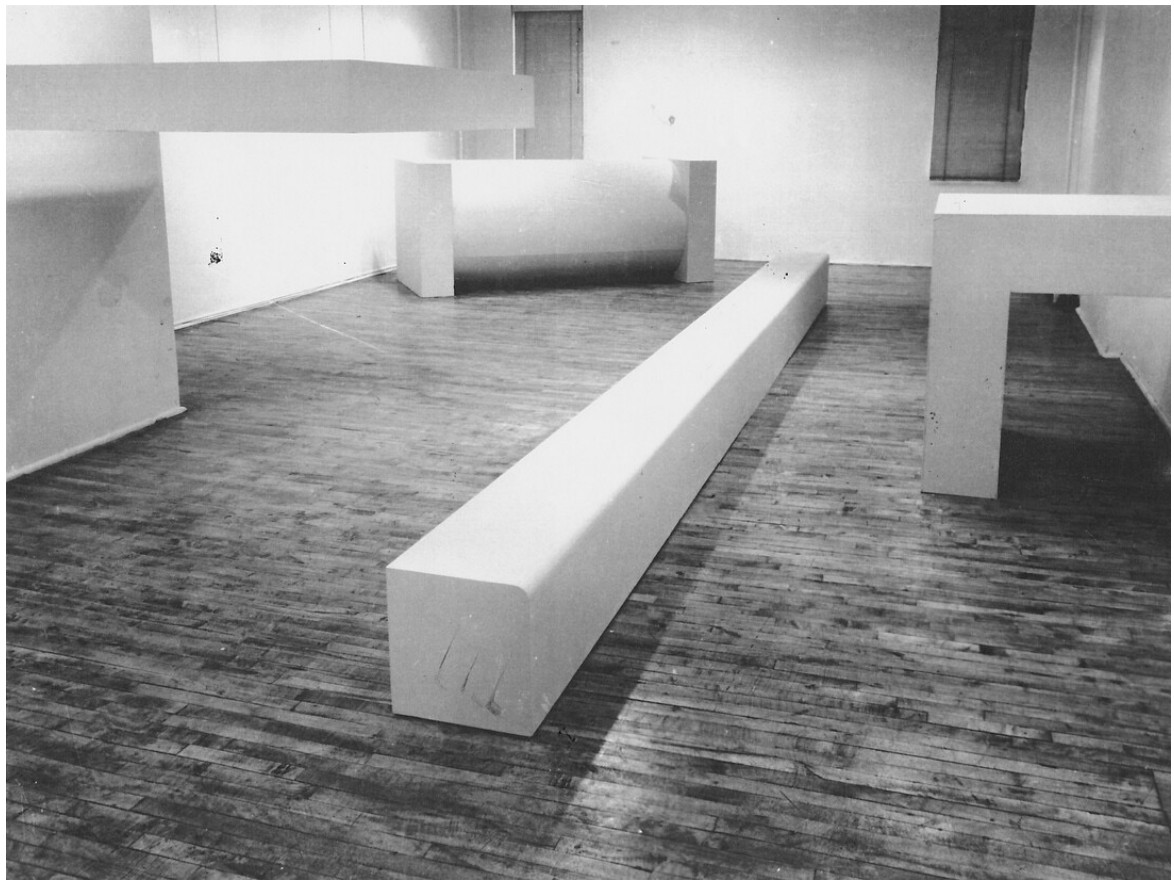
[fig. 6.13-6.15], **Measureings:** *'The Dramaturgy of Lime'* (2018)



[fig. 6.9], *Perspectives*: Robert Morris, 'Untitled' (1967)



[fig. 5.15], **Perspectives:** Robert Morris, 'Untitled (Corner Piece), Untitled (Cloud), Untitled (Floor Beam), Untitled (Table) (1964)



[fig. 5.11], **Perspectives:** Marcel Duchamp, '*Inframince (adjectif)...*' (1912-68)

infamance (adject.)

supra - ne
fama in fine
in substantif

Bel BEAUMONT & C^{ie}
NFOURNY
AU-THIERRY

L'œuf fixe phénix
M. P. M. M. M.



[fig. 6.17], **Perspectives:** Marcel Duchamp, '*Inframince (adjectif)...*' (1912-68)

L'acheteur d'un siège (qui veut
d'être quitte) est infra-mince

infra-mince (adject.)
sur mesure - ne
fait pas un bien

l'allegorie

[fig.5.14], **Perspectives:** Richard Serra, '*Gutter Corner Splash: Night Shift*' (1963/2018)



[fig.6.19], **Perspectives:** Richard Serra, '*Gutter Corner Splash: Night Shift*' (1963/2018)



[fig. 6.20. 6.21], **Perspectives:** Joseph Beuys, 'Fat Battery' (1963)



239-40 Fat felt sculptures, 1963, Wide White Space Gallery, Antwerp.
Layers, fillings and casings, flat and round batteries; variations on
'material never used in sculpture before'



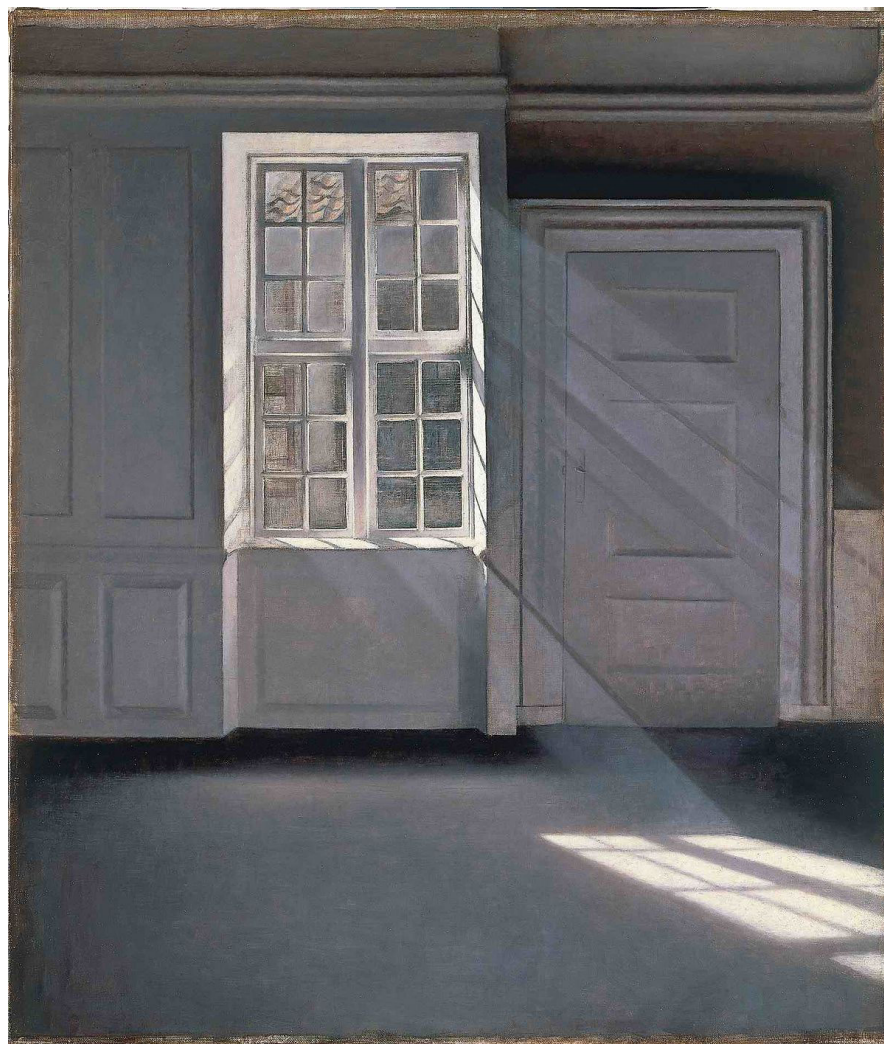
[fig. 7.1], **Perspectives:** Vilhelm Hammershøi, '*Interior. Strandgade 30*' (1901)



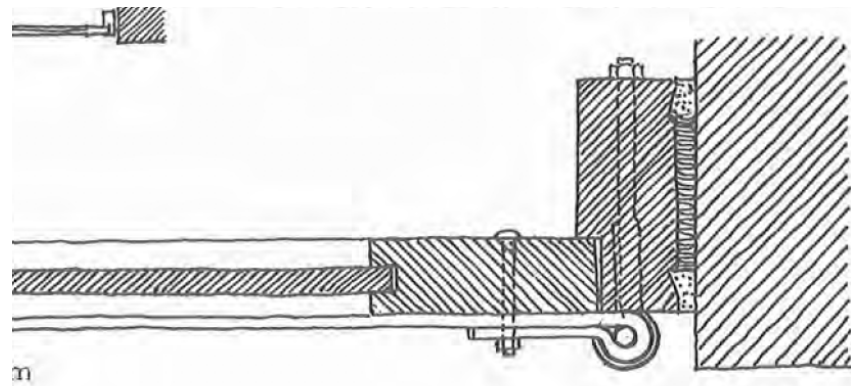
[fig. 7.2], **Perspectives:** Vilhelm Hammershøi, 'Stue i Strandgade med solskin på gulvet' (1901)



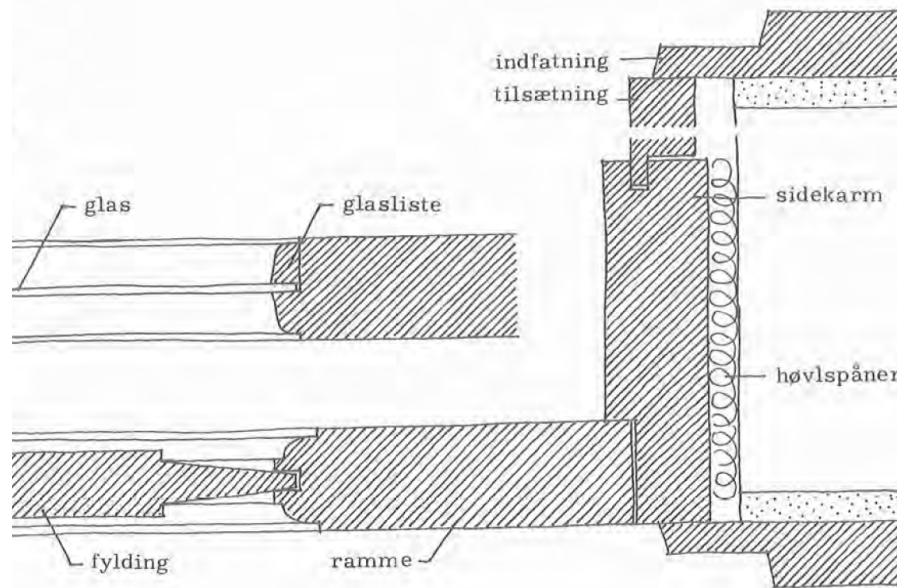
[fig. 7.14], **Perspectives:** Vilhelm Hammershøi, 'Sunbeams or Sunlight. "Dust Motes Dancing in the Sunbeams"' (1900)



[fig. 7.3, 7.4], *Panel door (details of schematic sectional drawing)*



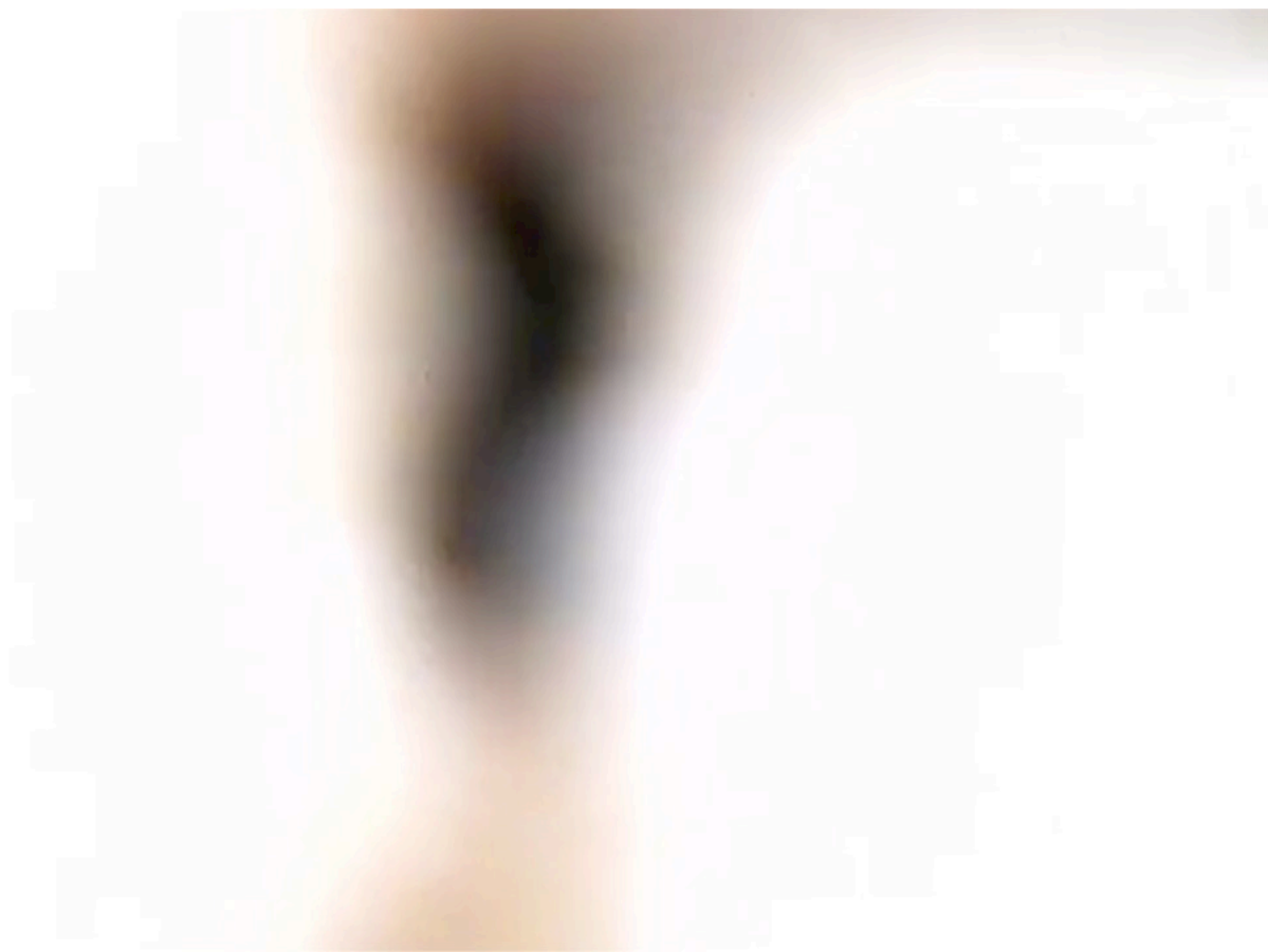
m



[fig. 7.5], **Measureings:** 'Panel Doors: Interior Visions' (2020)



[fig. 7.7], **Measureings:** 'Panel Doors: Interior Visions' (2020)



[fig. 7.8], **Measureings:** 'Panel Doors: Interior Visions' (2020)



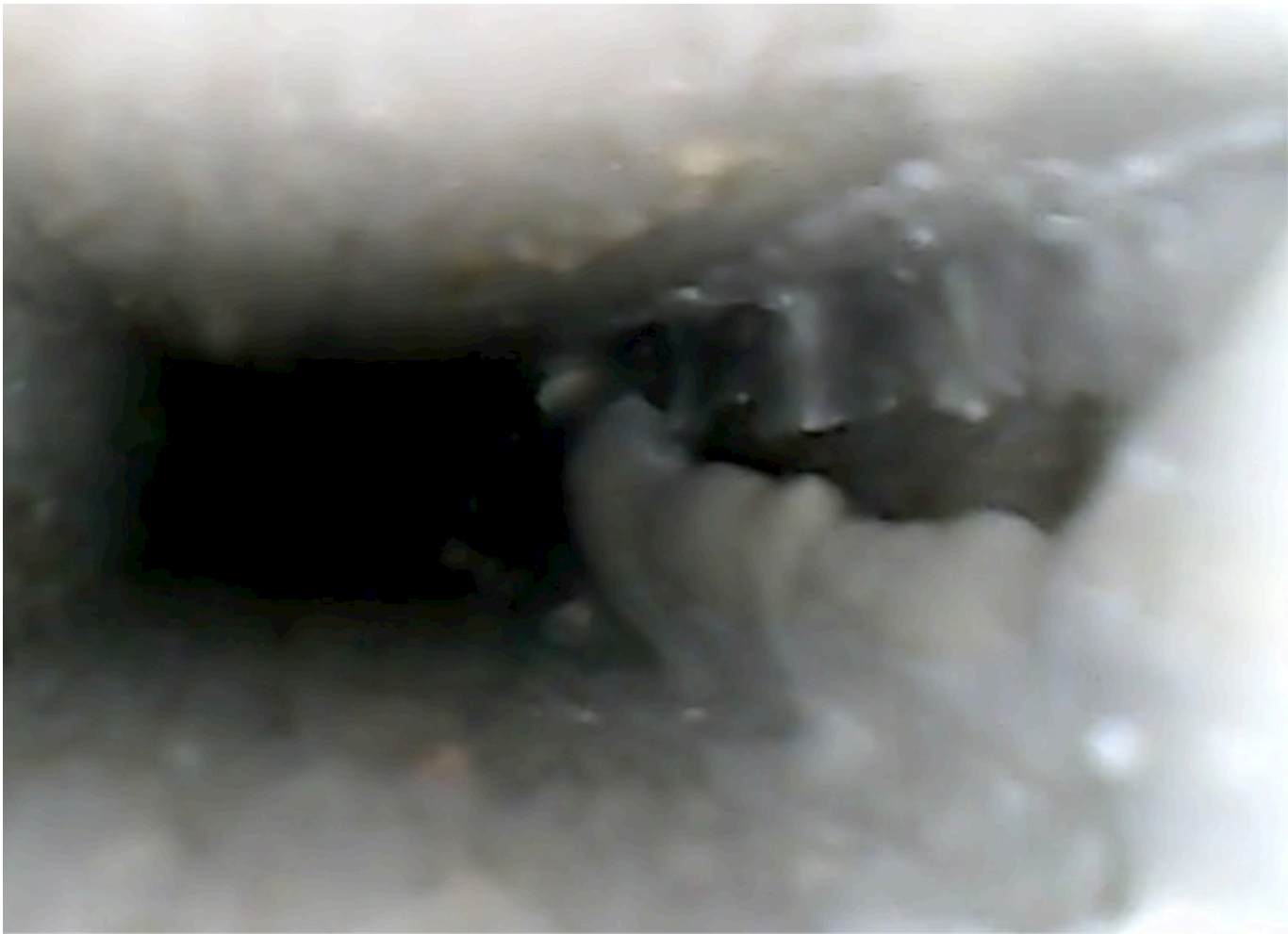
[fig. 7.9], **Measureings:** 'Panel Doors: Interior Visions' (2020)



[fig. 7.10, 7.21, 9.15], **Measureings:** *'Panel Doors: Interior Visions'* (2020)



[fig. 7.11], **Measureings:** 'Panel Doors: Interior Visions' (2020)



[fig. 7.12], **Measureings:** 'Panel Doors: Interior Visions' (2020)



[fig. 7.13], **Measureings:** 'Panel Doors: Interior Visions' (2020)



[fig. 7.15], **Perspectives:** Gordon Matta-Clark, 'Bronx Floor: Threshold' (1972)



[fig. 7.16], **Perspectives:** Gordon Matta-Clark, '*Conical Intersect*' (1975)



[fig. 7.17], **Perspectives:** Gordon Matta-Clark, '*Conical Intersect*' (1975)



[fig. 7.18], **Measureings:** 'Doors of Hammershøi: Surface conditions (130 years after)' (2021)



[fig. 7.19], **Measureings:** 'Doors of Hammershøi: Surface conditions (130 years after)' (2021)



[fig. 7.20], **Measurements:** 'Doors of Hammershøi: Surface conditions (130 years after)' (2021)



Measureings: *'Doors of Hammershøi: Surface conditions (130 years after)'* (2021)



[fig. 9.14], **Measureings:** 'Doors of Hammershøi: Surface conditions (130 years after)' (2021)



[fig. 7.22], *MDF 'panel door'*



[fig.9.1] **Measureings:** *Door sections*



[fig.7.23] **Measureings:** *Section of MDF 'panel door' (photo scan)*



[fig. 5.3], **Measureings:** 'Topographical Reliefs' (2021)



[fig. 8.3], **Measureings:** 'Topographical Reliefs' (2021)



[fig. 8.4], **Measureings:** 'Topographical Reliefs' (2021)



[fig. 8.5], **Measureings:** 'Topographical Reliefs' (2021)



[fig. 9.4], **Measureings:** 'Topographical Reliefs' (2021)



[fig. 8.7], **Measureings:** 'Topographical Reliefs' (2021)



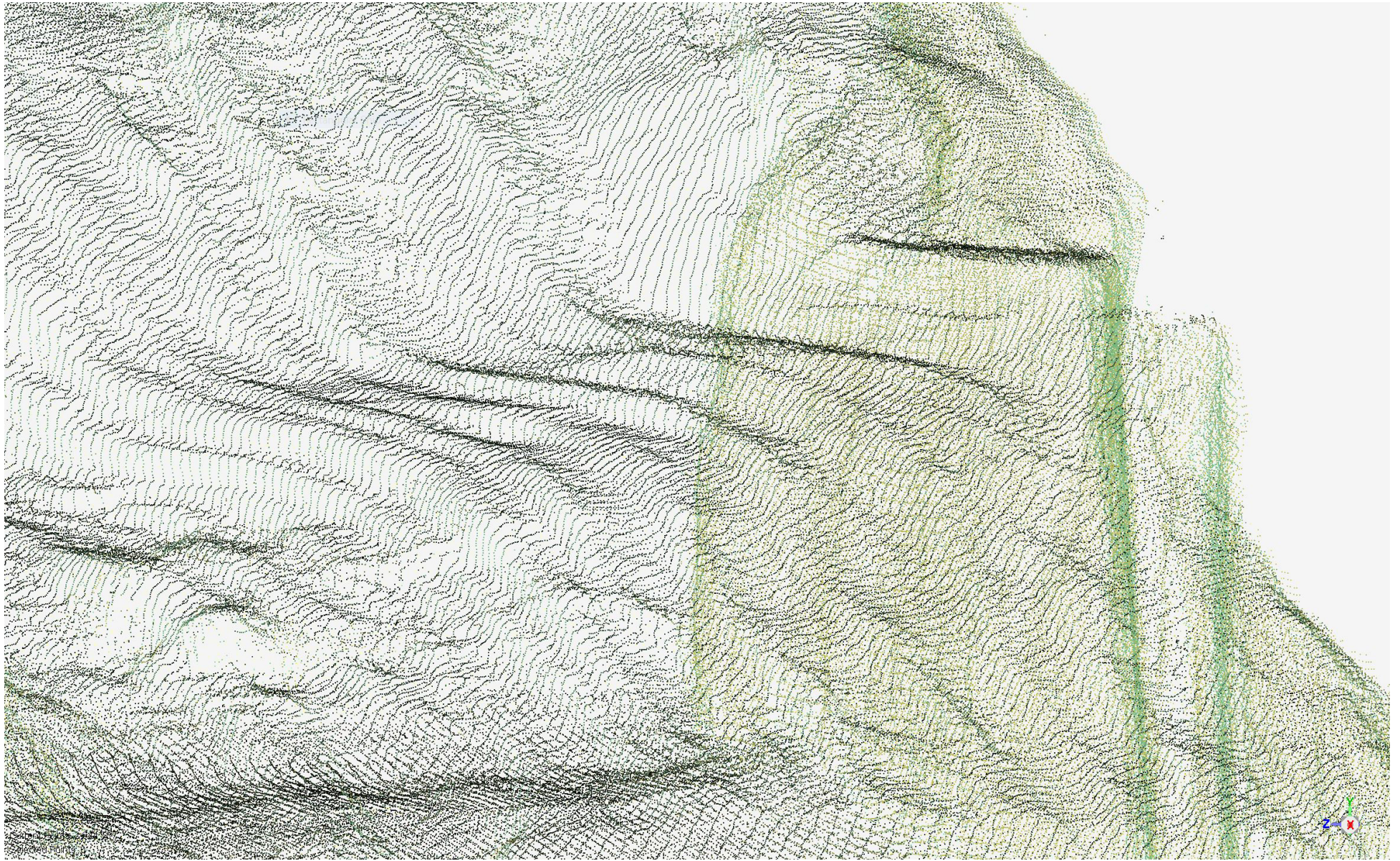
[fig. 8.8], **Measureings:** 'Topographical Reliefs' (2021)



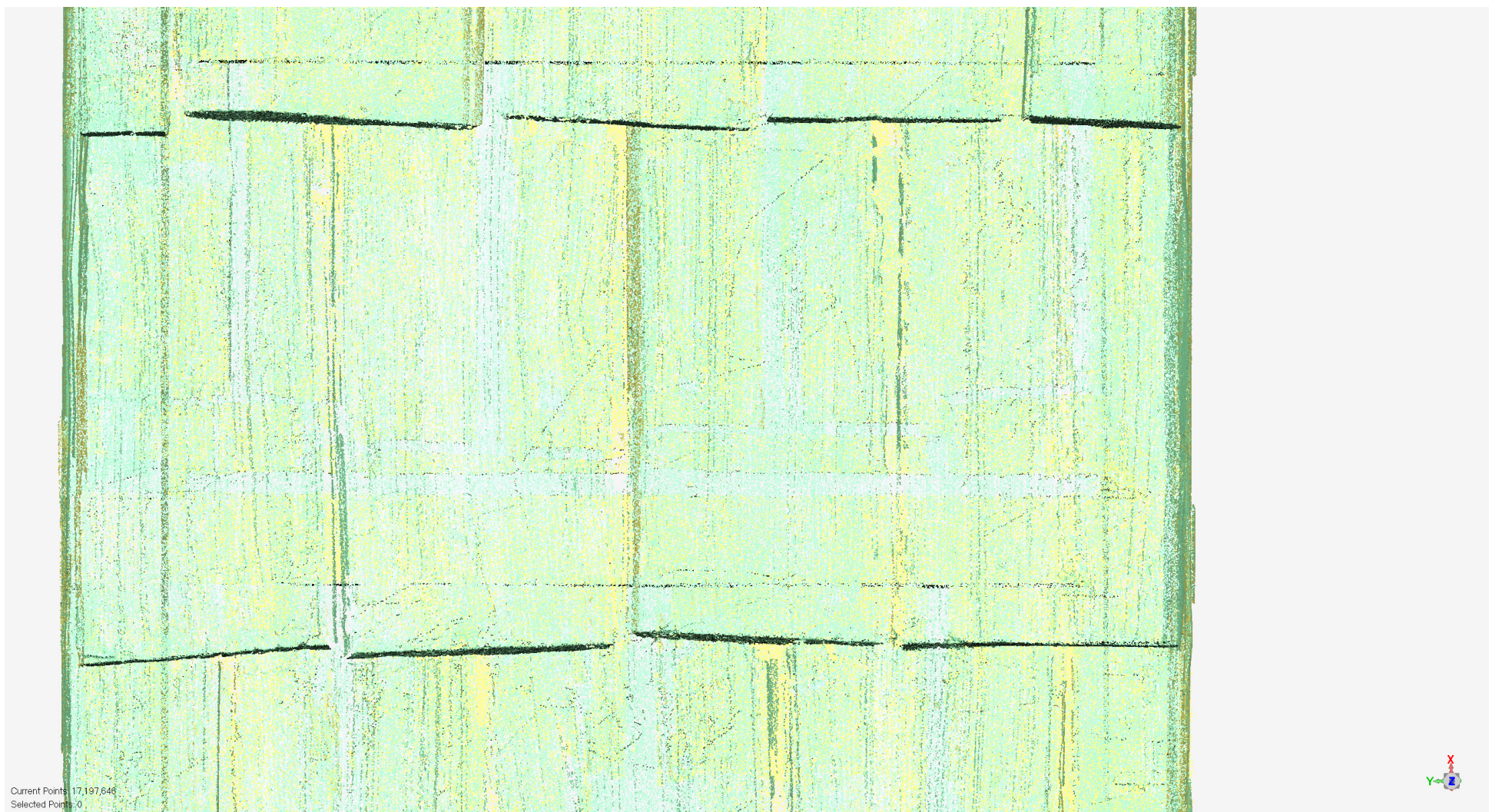
[fig. 8.9], **Measureings:** 'Topographical Reliefs' (2021)



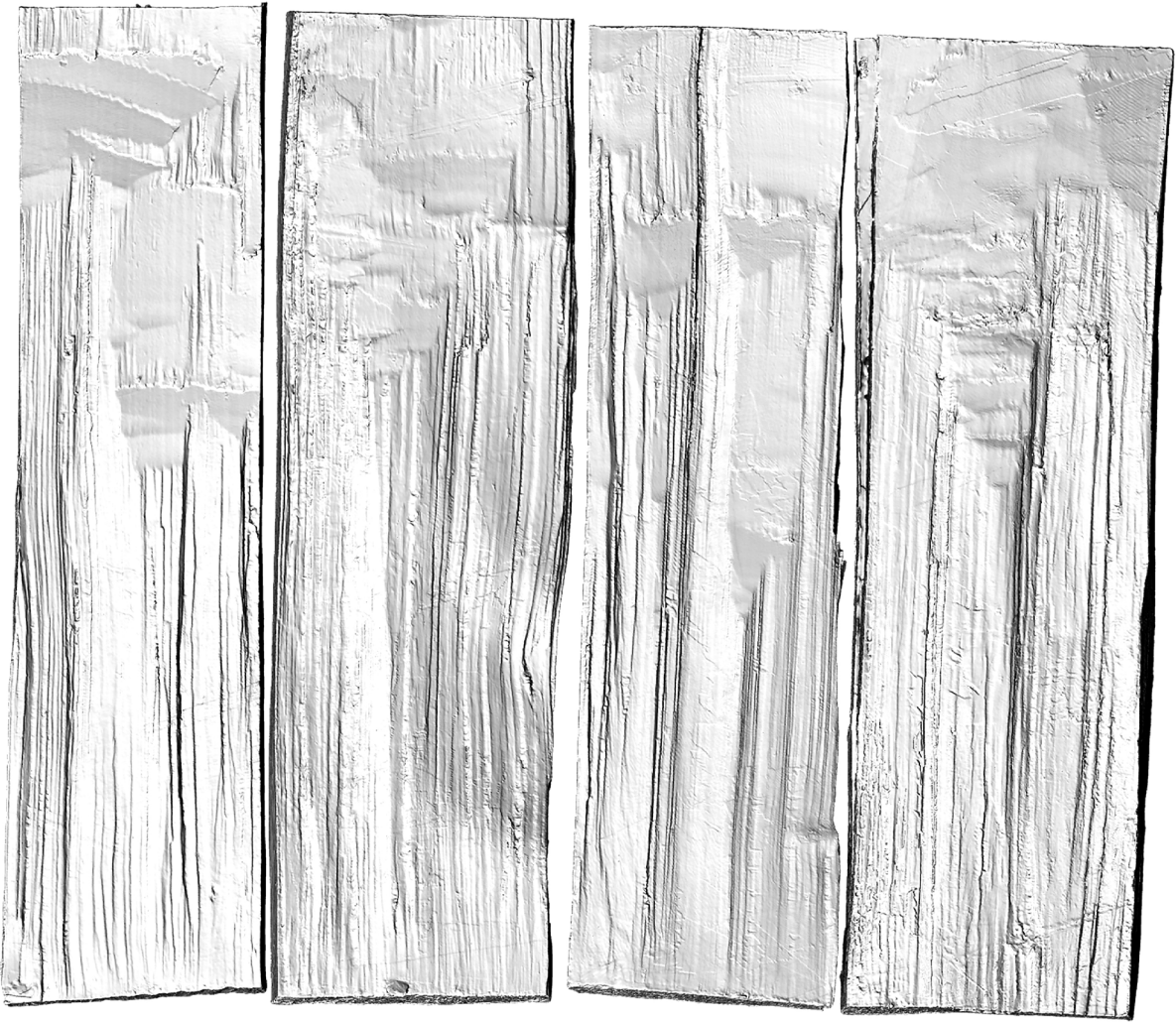
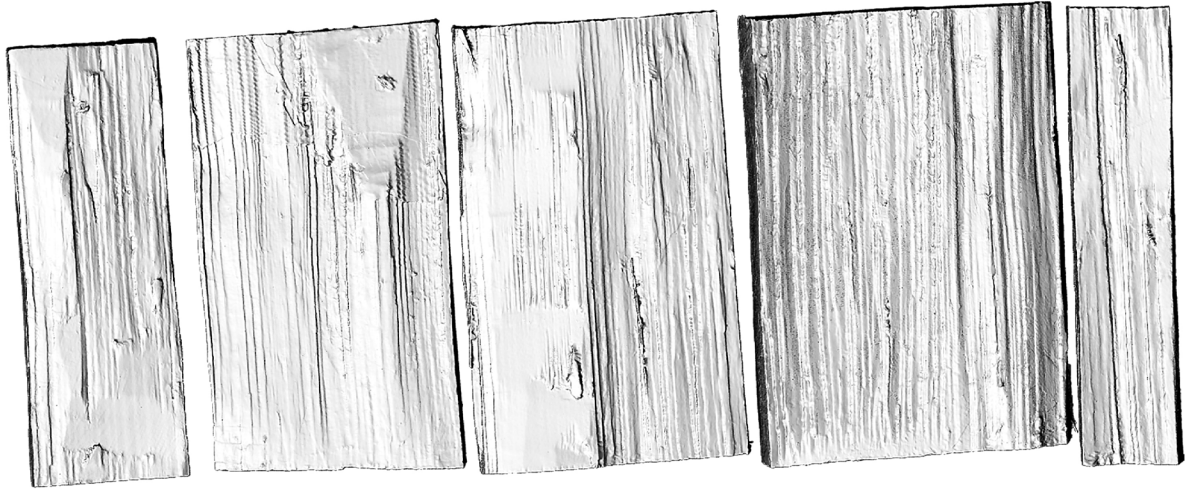
[fig. 8.10, 9.20], **Measureings:** 'Topographical Reliefs' (2021)



Measureings: *'Topographical Reliefs'* (2021)



[fig. 8.11], **Measureings:** 'Topographical Reliefs' (2021)



[fig. 8.12], **Measureings:** 'Topographical Reliefs' (2021)



Measureings: *'Topographical Reliefs'* (2021)



[fig. 8.13], **Measureings:** 'Topographical Reliefs' (2021)



Measureings: *'Topographical Reliefs'* (2021)



[fig. 8.14], **Measureings:** 'Topographical Reliefs' (2021)



Measurements: 'Topographical Reliefs' (2021)



[fig. 8.15], **Measureings:** 'Topographical Reliefs' (2021)



Measureings: *'Topographical Reliefs'* (2021)



Measureings: *'Topographical Reliefs'* (2021)



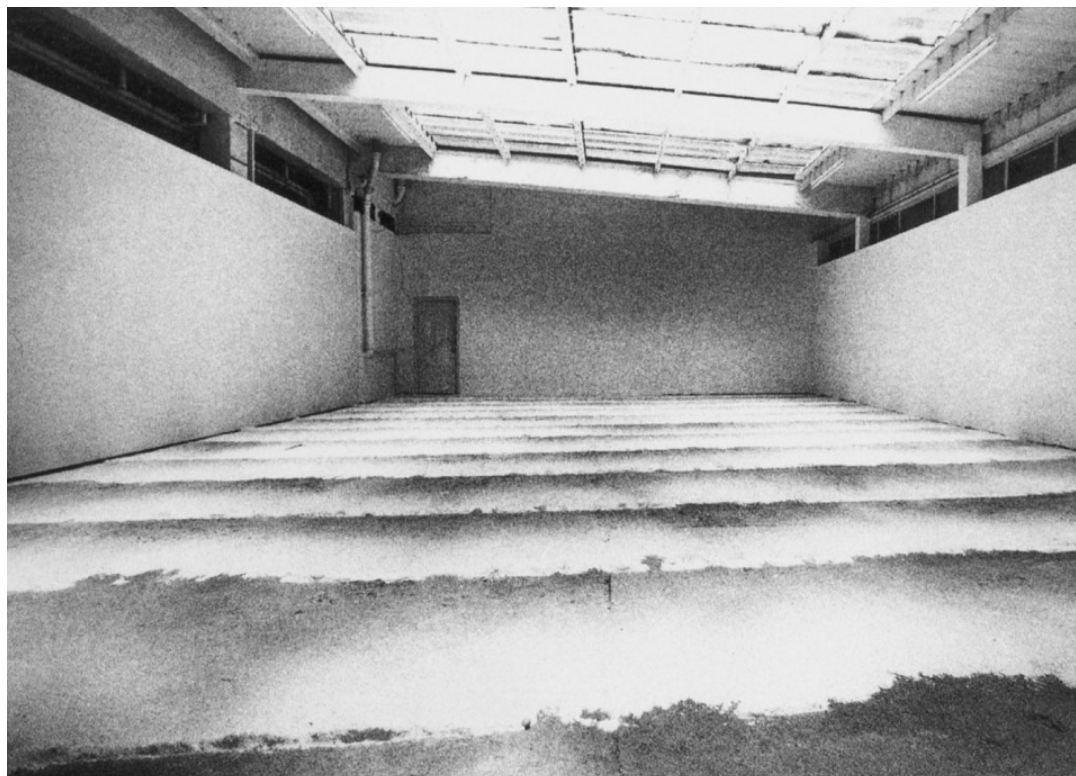
[fig. 5.4], **Measureings:** 'Topographical Reliefs' (2021)



[fig. 8.16], **Perspectives:** Barry Le Va, '6 Blown Lines (Accumulation Drift)' (1969)



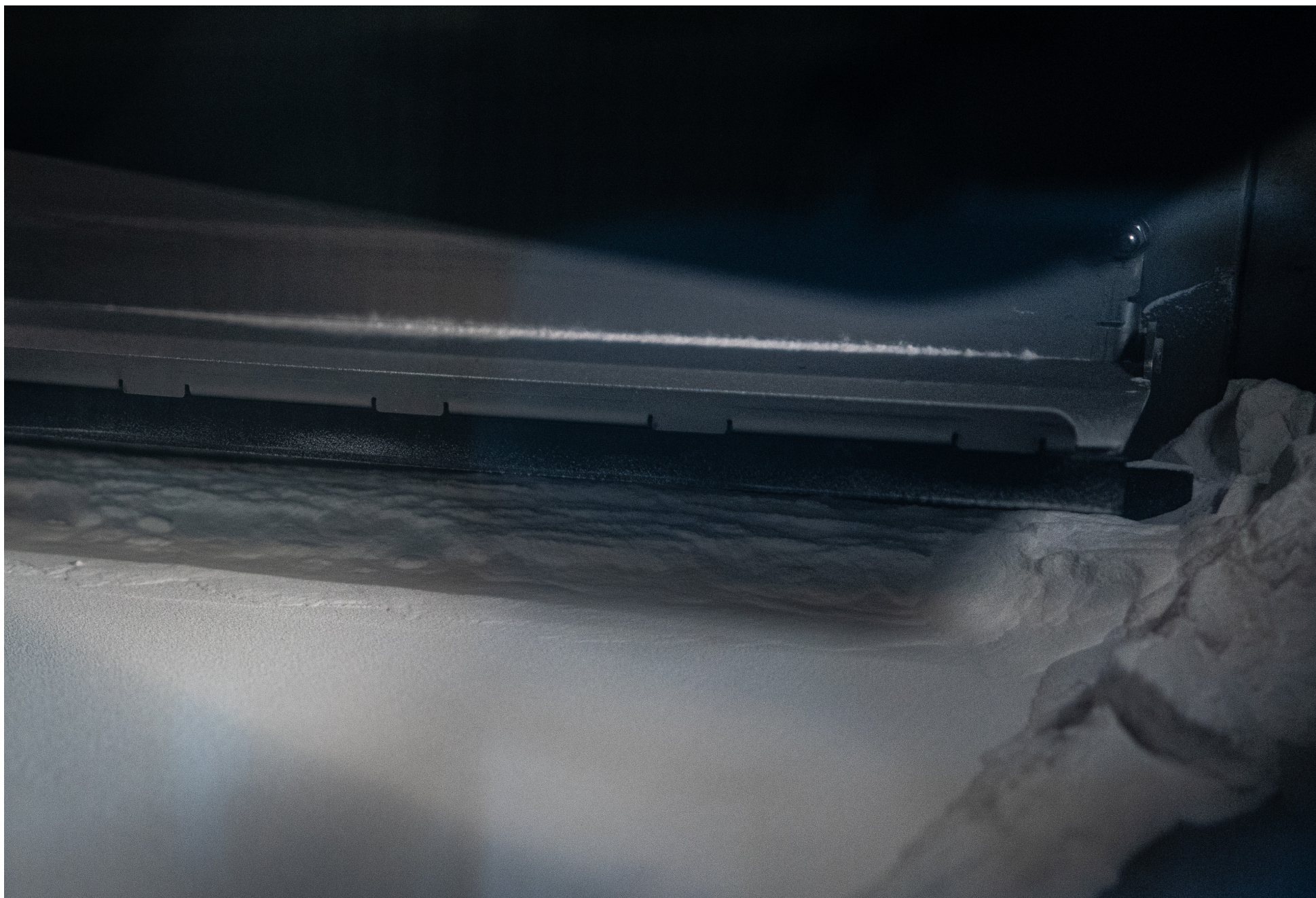
[fig. 8.17], **Perspectives:** Barry Le Va, 'Extended Vertex Meetings: Blocked; Blown Outward' (1969-71)



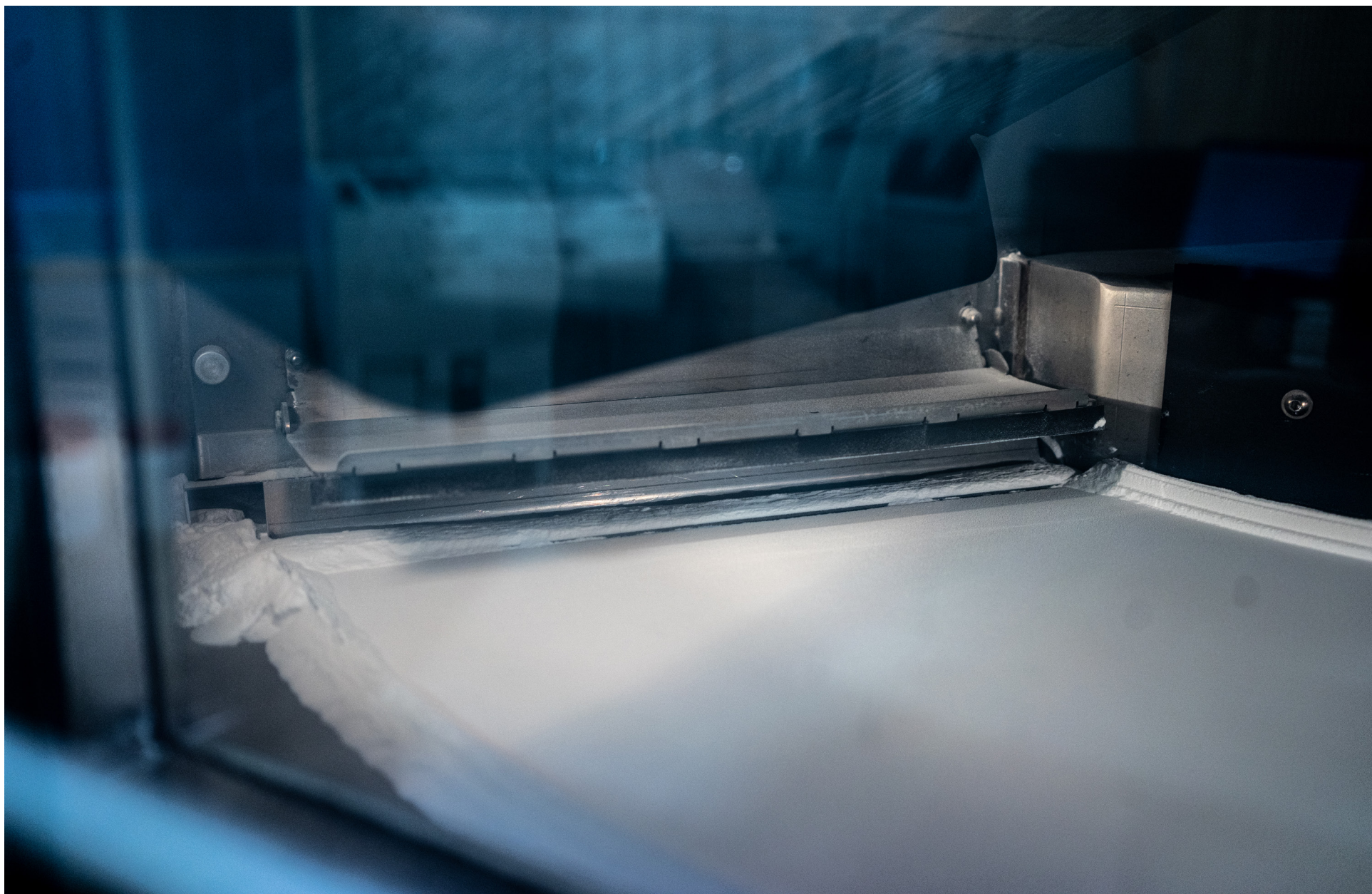
[fig. 8.18], **Perspectives:** Barry Le Va, 'Extended Vertex Meetings: Blocked; Blown Outward' (1969-71)



[fig. 8.19], **Measureings:** 'Topographical Reliefs' (2021)



[fig. 9.9], **Measureings:** 'Topographical Reliefs' (2021)



[fig. 8.20, 8.21], **Measureings:** 'Topographical Reliefs' (2021)



[fig. 8.22, 8.23], **Measureings:** 'Topographical Reliefs' (2021)



[fig. 8.24], **Measureings:** 'Topographical Reliefs' (2021)



[fig. 8.25], **Measureings:** 'Topographical Reliefs' (2021)



[fig. 8.26], **Measureings:** 'Topographical Reliefs' (2021)



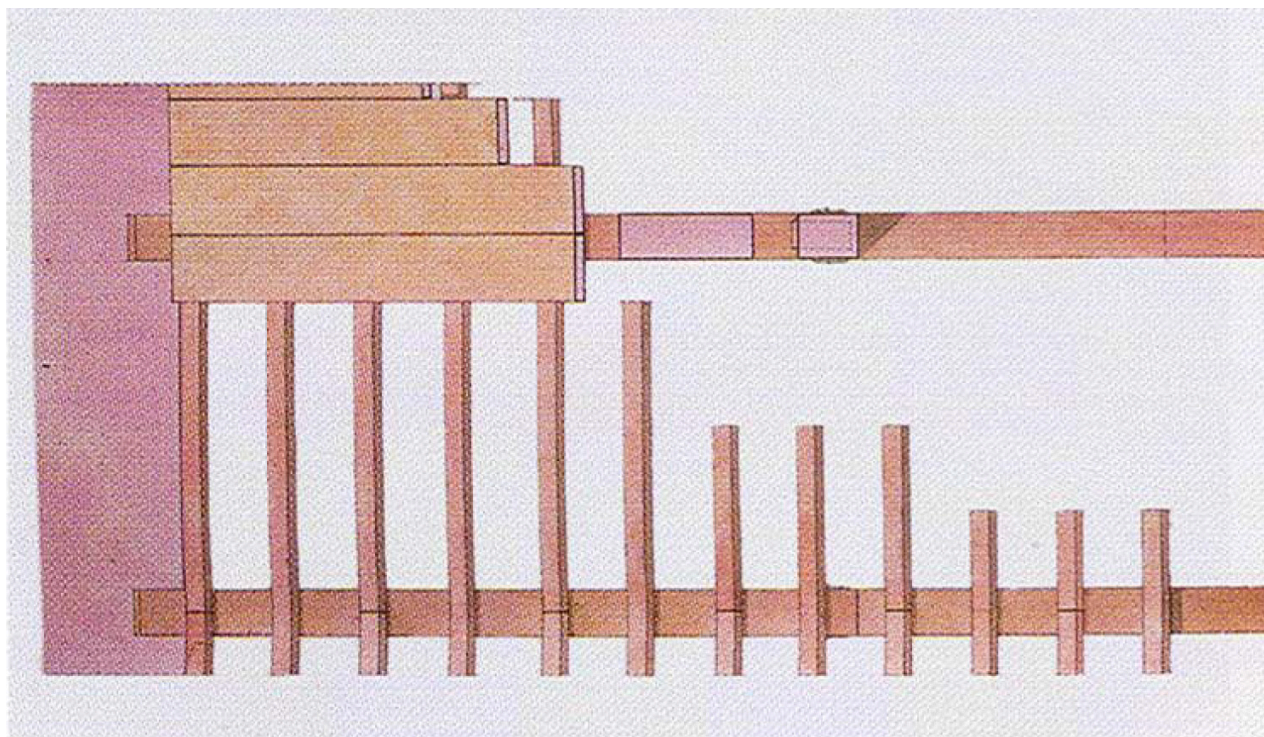
[fig. 8.27], **Measureings:** 'Topographical Reliefs' (2021)



[fig. 8.28], **Measureings:** 'Topographical Reliefs' (2021)



[fig. 9.5], Venice, plan drawing (floor structure, gap, wall)



[fig. 9.10], *Vapour barrier: Acid-resistant stainless steel plate*



[fig. 9.11], *Lime, parge coat*

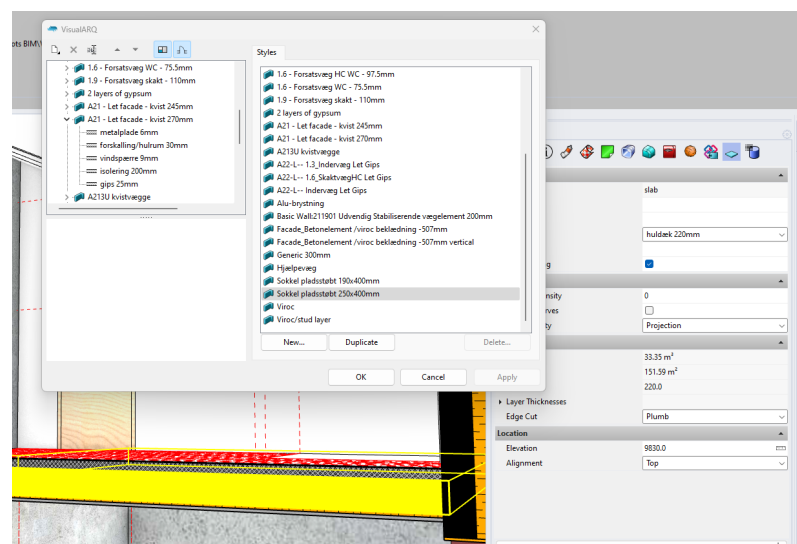


[fig. 9.12], *Oakum* ('værk')



[fig. 9.17-9.19], *Screenshots from BIM (3D model)*

ISOLERING BLØD					
	Grafik	Navn	Definition		
Stilistisk (ID)	-	-	-		
Snitskraving, mønster		bips-Insulation-Batt	Vinkel: 90° Afstand: 1,5 mm Linje længde: 1 mm Mellemrum: 1 mm		
Snitskraving, farve		-	Karry RGB 255-191-000		
Præsentationsform	I 1D	II 2D geometri	III 2D/3D byggeobjekt	IV 2D/3D byggeobjekt farve	V Visualisering
Eksempel					
Snitlinje	-	3	3	3	3
Projektionslinje	-	3	3	3	3
Linjefarve	-	Karry RGB 255-191-000	Karry RGB 255-191-000	Karry RGB 255-191-000	Sort RGB 000-000-000
Snitflade	-	-	bips-Insulation-Batt	Karry RGB 255-191-000	bips-Insulation-Batt
Projektionsflade	-	-	-	-	Karry RGB 255-191-000



[fig. 10.1], *Hallingdal Folkemuseum (Gol, 2022)*



Hallingdal Folkemuseum (Gol, 2022)



Photo credits

Unless otherwise noted, all photographs and drawings are by the author of this dissertation.

[fig.2.1]
Historic photograph from Venice.
Original copyright unknown.

[fig.2.2]
In Doglioni, Francesco, and Angela Squassina. "Legami, connessioni e sconessioni nella tradizione costruttiva veneziana." In Venezia: forme della costruzione forme del dissesto, 96–97. Venezia: Libreria Cluva, 2011.
Original copyright unknown.

[fig.2.4]
In Venice: Extraordinary Maintenance, 2004.
Original copyright unknown.

[fig.3.1]
Copyright by Jan T. Espedal

[fig.3.2]
Copyright by Trygve Indreliid

[fig.3.3]
Copyright by NGU, NORUT, PPO Labs

[fig.4.2]
Copyright by DALiM

[fig.4.3]
Copyright by Laurian Ghinitoiu

[fig.5.7, 5.8]
Video stills from *Stalker* (1979). Copyright of image unknown.

[fig.5.11]
Copyright by Association Marcel Duchamp / ADAGP, Paris, Centre Pompidou, MNAM-CCI, Dist. RMN-Grand Palais / Georges Meguerditchian

[fig.5.14]
Copyright by Richard Serra / Artists Rights Society (ARS), New York

[fig.5.15]
Courtesy of Green Gallery, New York

[fig.6.1]
Copyright unknown.

[fig.6.2]
Copyright unknown.

[fig.6.5]
Copyright unknown.

[fig.6.9]
Copyright by Robert Morris / Artists Rights Society (ARS), New York

[fig.6.17]
In Marcel Duchamp, Notes, trans. Paul Matisse (Paris: Centre National d'Art et de Culture Georges Pompidou, 1980). Photoscan. Original copyright unknown.
[fig.6.18, 6.19]
Copyright by Richard Serra / Artists Rights Society (ARS), New York

[fig. 6.20]
Copyright by DACS 2005. Photograph taken in 1963, reproduced in Joseph Beuys, exhibition catalogue, Solomon R. Guggenheim Museum, New York 1979

[fig. 6.21] Copyright by DACS, 2023

[fig. 7.1, 7.2]
Public Domain

[fig.7.3, 7.4]
Images from Gjerløv-Knudsen, and H. Bonnesen. 'Husbygningsteknik,' København: Jul. Gjellerups Forlag, 1948. Original copyright unknown.

[fig.7.14]
Public Domain

[fig. 7.15]
Copyright by the Estate of Gordon Matta-Clark/Courtesy of the Estate of Gordon Matta-Clark and David Zwirner, New York/London

[fig. 7.16]
Copyright by the Estate of Gordon Matta-Clark / Artists Rights Society (ARS), New York

[fig. 7.17]
Copyright by the Estate of Gordon Matta-Clark / DACS

[fig. 8.16]
Courtesy of Nigel Greenwood Gallery Archive

[fig. 8.17]
Courtesy of the Estate and David Nolan Gallery

[fig. 8.18]
Courtesy of the Estate and David Nolan Gallery

[fig. 9.5] Copyright by Mario Piana

[fig. 9.10]
Copyright by Cortex Fasadgruppen

[fig. 9.11]
Copyright unknown.

[fig. 9.12]
Image from Bak-Andersen, Søren. 'Gammel viden til nye bygninger: Traditionelle byggematerialer og håndværksteknik i nutidigt byggeri,' København: KADK, 2020. Original copyright unknown.

[fig. 9.17]
Copyright by BIPS

[fig.9.18, 9.19]
Copyright by BRIQ

