

naive academics
and
academic illiterates
in architecture

prof. walter uttner AA
wu@sarch.dk

Skozi dvom do izčiščenja!
Through doubts to a resolution!



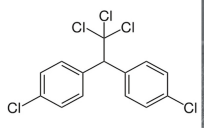
how to get knowledge and expertise
(in and about architecture) ?

how to generate new knowledge by research ?

how to test knowledge over time ?

what future for our profession ?

knowledge in context
to time and space



**PROTECT YOUR CHILDREN
Against Disease-Carrying Insects!**

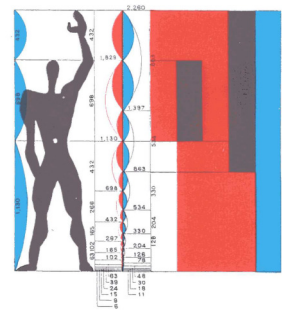
**TRIMZ DDT
CHILDREN'S ROOM
WALLPAPER**

KILLS FLIES, MOSQUITOS, ANTS



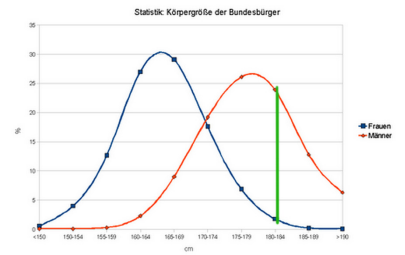
Hazardous Substances Banned in US, 1972-1991

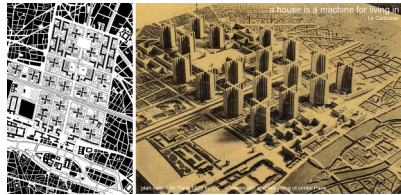
- 1972: Registration of DDT-1972;
- 1972: Pesticide reform (1972);
- 1972: Production of asbestos for commercial use -1974;
- 1972: Asbestos in building materials -1975;
- 1972: Lead in gasoline in new vehicles -1975;
- Production of PCB -1977;
- Stop of DDT based paints by consumers -1978;
- Use of mercury in exterior paints -1978;
- 1980: 107 types of hazardous substances in US.



Körpergröße nach Ländern

| Land | Männliche Bevölkerung / Einwohner / Mann | Weibliche Bevölkerung / Einwohner / Frau |
|------------------------------|--|--|
| Australien | 173 cm | 164 cm |
| Belgien | 175 cm | 165 cm |
| Dänemark | 180 cm | 171 cm |
| Deutschland | 174 cm | 165 cm |
| Frankreich | 171 cm | 162 cm |
| Irland | 170 cm | 161 cm |
| Italien | 172 cm | 163 cm |
| Japan | 165 cm | 156 cm |
| Kanada | 174 cm | 165 cm |
| Niederlande | 178 cm | 169 cm |
| Polen | 172 cm | 163 cm |
| Portugal | 167 cm | 158 cm |
| Spanien | 169 cm | 160 cm |
| Schweden | 181 cm | 172 cm |
| Schweiz | 173 cm | 164 cm |
| USA | 175 cm | 166 cm |
| UK | 170 cm | 161 cm |
| USA - West | 177 cm | 168 cm |
| USA - East | 173 cm | 164 cm |
| USA - Midwest | 174 cm | 165 cm |
| USA - South | 172 cm | 163 cm |
| USA - North | 173 cm | 164 cm |
| USA - West Coast | 176 cm | 167 cm |
| USA - Midwest West | 174 cm | 165 cm |
| USA - Midwest East | 172 cm | 163 cm |
| USA - South West | 171 cm | 162 cm |
| USA - South East | 170 cm | 161 cm |
| USA - North West | 173 cm | 164 cm |
| USA - North East | 171 cm | 162 cm |
| USA - West North | 174 cm | 165 cm |
| USA - West South | 172 cm | 163 cm |
| USA - East North | 171 cm | 162 cm |
| USA - East South | 170 cm | 161 cm |
| USA - Midwest North | 172 cm | 163 cm |
| USA - Midwest South | 171 cm | 162 cm |
| USA - South West North | 171 cm | 162 cm |
| USA - South West South | 170 cm | 161 cm |
| USA - South East North | 170 cm | 161 cm |
| USA - South East South | 169 cm | 160 cm |
| USA - North West North | 173 cm | 164 cm |
| USA - North West South | 172 cm | 163 cm |
| USA - North East North | 171 cm | 162 cm |
| USA - North East South | 170 cm | 161 cm |
| USA - West North North | 174 cm | 165 cm |
| USA - West North South | 173 cm | 164 cm |
| USA - West South North | 172 cm | 163 cm |
| USA - West South South | 171 cm | 162 cm |
| USA - East North North | 171 cm | 162 cm |
| USA - East North South | 170 cm | 161 cm |
| USA - East South North | 170 cm | 161 cm |
| USA - East South South | 169 cm | 160 cm |
| USA - Midwest North North | 172 cm | 163 cm |
| USA - Midwest North South | 171 cm | 162 cm |
| USA - Midwest South North | 171 cm | 162 cm |
| USA - Midwest South South | 170 cm | 161 cm |
| USA - South West North North | 171 cm | 162 cm |
| USA - South West North South | 170 cm | 161 cm |
| USA - South West South North | 170 cm | 161 cm |
| USA - South West South South | 169 cm | 160 cm |
| USA - South East North North | 170 cm | 161 cm |
| USA - South East North South | 169 cm | 160 cm |
| USA - South East South North | 169 cm | 160 cm |
| USA - South East South South | 168 cm | 159 cm |
| USA - North West North North | 173 cm | 164 cm |
| USA - North West North South | 172 cm | 163 cm |
| USA - North West South North | 172 cm | 163 cm |
| USA - North West South South | 171 cm | 162 cm |
| USA - North East North North | 171 cm | 162 cm |
| USA - North East North South | 170 cm | 161 cm |
| USA - North East South North | 170 cm | 161 cm |
| USA - North East South South | 169 cm | 160 cm |
| USA - West North North North | 174 cm | 165 cm |
| USA - West North North South | 173 cm | 164 cm |
| USA - West North South North | 173 cm | 164 cm |
| USA - West North South South | 172 cm | 163 cm |
| USA - West South North North | 172 cm | 163 cm |
| USA - West South North South | 171 cm | 162 cm |
| USA - West South South North | 171 cm | 162 cm |
| USA - West South South South | 170 cm | 161 cm |
| USA - East North North North | 171 cm | 162 cm |
| USA - East North North South | 170 cm | 161 cm |
| USA - East North South North | 170 cm | 161 cm |
| USA - East North South South | 169 cm | 160 cm |
| USA - East South North North | 170 cm | 161 cm |
| USA - East South North South | 169 cm | 160 cm |
| USA - East South South North | 169 cm | 160 cm |
| USA - East South South South | 168 cm | 159 cm |





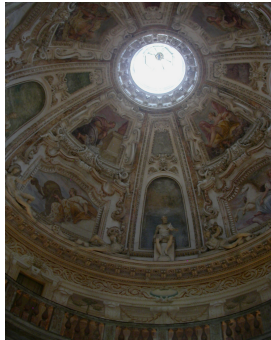
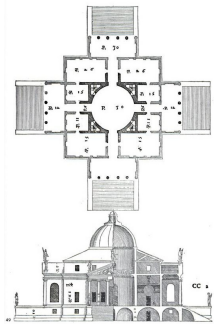
Architecture belongs to culture, not to civilization

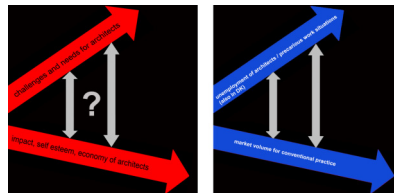
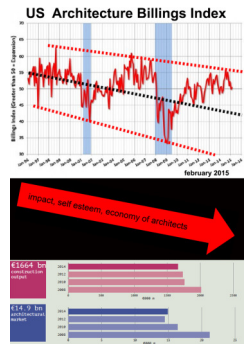
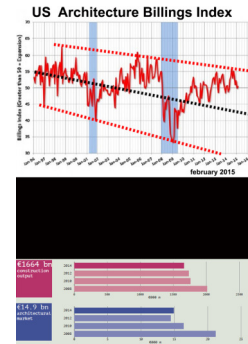
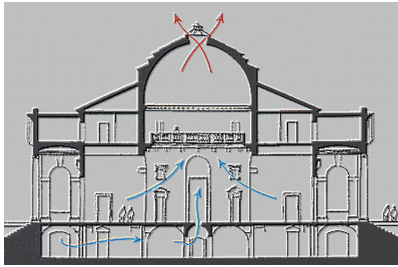
Alvar Aalto

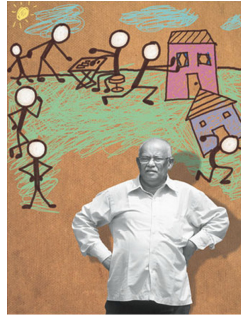
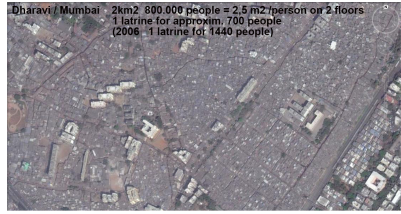


The hallowed ground of our so-called creativity and the aestheticized stronghold of architectural academia may well require nothing less than a direct frontal assault if we are ever to establish an effective antidote to the status quo of professional practice that it largely serves to legitimize.

Kenneth Frampton 'Urbanization and its Discontents: Megaforn as Sustainability'







dr. jockim arputham a public intellectual
 UN representative for slum sanitation



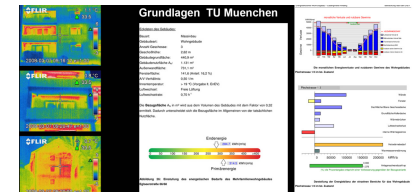


Design for resilience of cities needs to happen on different layers (cultural, social, political, economic, educational, technological etc.) and on all scales from territory down to detail. Therefore resilient urban design approaches are integrate and transdisciplinary.



Above all, architects should be intellectuals - and this is not defined by the job they do but by the manner in which they act, by the values they uphold.

We need more architects to become public intellectuals, who participate in public affairs discourse of society and engage with the global issues of our time, using their wide field of knowledge and competences.



results of sociological investigation of Coburg University before competition :

average age 62

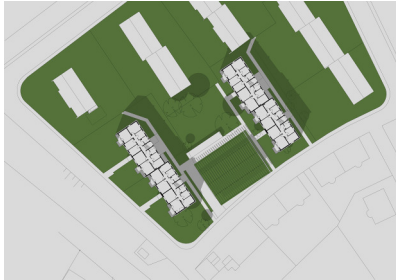
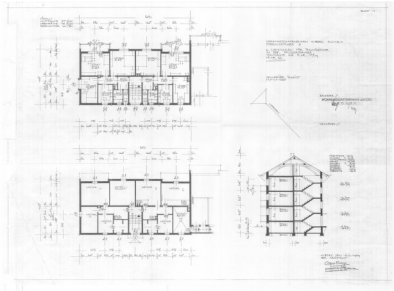
high satisfaction of inhabitants with there housing situation

'we don't need anything !'

There were 4 fixed preconditions only:

- a) the ground floor flats should be disabled adapted
- b) the execution work must be possible while inhabitants stay in their apartments
- c) the maximum primary energy consumption may not exceed a figure 50 % of the legal maximum determined in 2007 (the maximum primary energy was calculated with 52 kWh/m²a – so the competition entry may not exceed 48 kWh/m²a)
- d) the maximum overall transmission losses may not exceed a figure 50% of the legal maximum determined 2007 (50% of 0.59 W/m²K) or 0.29 W/m²K)

architectural acupuncture

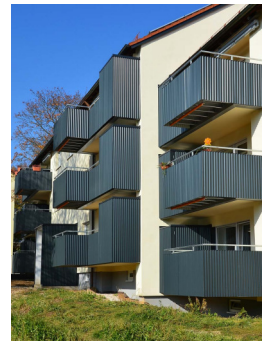


1 Finding a combined solution for upgrading the existing green space and turning it into a usable common and communicative space with providing disabled access on ground floor level and reconsidering the narrowness and darkness of the entrances





2 Changing all linear and not very useful balconies into small terraces. Providing privacy for these new private outdoor spaces.



3 Finding an ambitious conception for energetic improvement stronger than the requirement of the competition document by minimizing technical systems and using low impact building surgery. Handling this as a chance when the building was new, before the windows were changed individually to the worse.

